

# PLUS 2D WOOD

Nesting and Panel Optimization Software

for  
**Manual cutting,  
CNC Panel saws,  
Beam saws or Routers**

**Cutting edge  
Technologies for  
wood working  
professionals**

**PROVEN ▶ POWERFUL ▶ PROFITABLE**  
Save Time Save Material Improve Automation

www.nirvanatec.com

## Other optional modules

- **PLUS BOMGen**: Estimation and quotation software that generates Bill of Materials for any project
- **PLUS Replicam**: Digitizing software to replicate templates
- **PLUS 1D**: Bar nesting software for reducing waste in cutting 1D (lineal) materials like pipes, bars, sections, channels, profiles and extrusions
- **PLUS Label maker**: Bar code label printing software to print bar coded labels using ordinary printer
- **CNC interfaces**: To your panel saws and routers
- **Pattern amendment**: Manually create and edit patterns
- **Destacking optimization**: To minimize number of open stacks
- **Other Options**: Filler parts, maximum different parts in layout



PLUS BOMGen

## Company Profile

**Nirvana Technologies Pvt. Ltd.** is an India based company specializing in providing optimization technologies and custom software solutions for the sheet metal, glass and wood working industries. We pride ourselves in providing software solutions that enhance our customer productivity and profitability because they are easy to use, of good quality and competitively priced.

## Testimonials

*A great program, does exactly what we need.*  
Robert Berger, Window Tech., USA  
*PLUS 2D is easy to deploy and use. It has resulted in substantial savings for our company.*  
Information System Coordinator, Frigoglas  
*I really appreciate the time you took to answer my questions. I find this attitude both rare and refreshing in a world that seems to be built on the concept of sell and run.*  
Tony Feuer, Mazatlan, Mexico.

## Customization

*Nirvana will gladly customize PLUS 2D to meet your specific needs. We are adding custom links to CNC controllers.*  
*CNC equipment manufacturers and OEM's interested in bundling our software along with their machine's can get in touch with us for developing a custom interface to cutting tables, saws and routers.*

## Recommended System Requirements

Pentium 4 or above, 128 MB Disk Space, Microsoft Windows 98/ME/NT/2000/XP or later  
Available in BULGARIAN, CHINESE, ENGLISH, FRENCH, GERMAN, ITALIAN, KOREAN, PORTUGUESE, RUSSIAN, SLOVENIA, SPANISH, TURKISH

For more information contact:

**NIRVANA TECHNOLOGIES PVT. LTD.**

492, Sahakar Nagar, Lane 1, Vithag 2, Chembur, Mumbai-400 071, INDIA.

Phone: +91-22-2551 8312. Fax: +91-22-2550 8316

Email: info@nirvanatec.com. Website: www.nirvanatec.com



## Maintain Your Competitive Edge With

# PLUS 2D WOOD

A comprehensive optimization solution for the woodworking industry

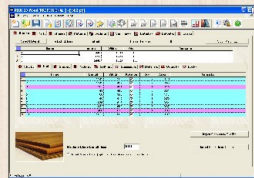
PLUS 2D - Wood is a nesting and panel optimization software for generating optimized cutting plans from your outlists and maximizing your panel yields. Based on the reliable PLUS 2D cutting optimization technology it constantly delivers high utilization layouts and is ideal for cutting using panel saws, sliding table saws, beam saws and routers.

It accurately estimates material requirements, and provides the answers you need, in a fraction of the time it takes to calculate manually, significantly reducing the time for costing, estimation, planning and production.

**PLUS 2D is the single most cost effective tool you can add to your business.**

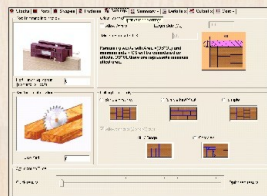
## Application Areas

- Office and modular furniture manufacturers
- Cabinet makers
- Building panel and partitions
- Builders and architects
- Carpentry, Laminated, Wood merchants
- Other applications in sheet metal, glass, plastics, etc.



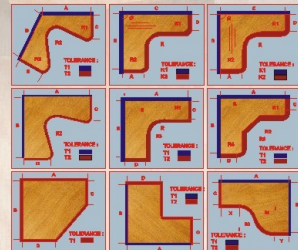
## Key Features

- Advanced optimizer, designed to deliver maximum yield
- Speed allows you to check alternative scenarios quickly
- Options for trim cuts, stock margins, Kerf allowance
- Grain direction to prevent part rotation when using panels with grains
- Integrated Inventory module for efficient stock tracking and offcut control
- Cut complexity selection allows a balance between utilization and ease of cutting
- Re-nesting, layout rejection, user defined offcut criteria
- Edit and save a pattern manually
- Import CAD shapes via DXF
- Color coded output in RTF and DXF



## Easy data entry and intuitive user interface

- No learning curve, simple wizard like user interface
- Simply copy and paste from spreadsheets, tables
- Import TEXT files and Comma Separated Value files (CSV)
- Data entry in any units (mm, inches, fractional inches, ...)
- Library of standard parametric shapes
- Product library and parametric product libraries
- Identify offcuts with your selection criteria, and recycle remnants into profits
- Facility to accommodate filler parts
- Addition of user definable columns



## Simple no-nonsense output

- Detailed customizable reports
- Complete layout drawings
- Material requirements and material balance lists
- Summaries of each layout
- Weights, areas of components, stocks, offcuts and scrap
- Cutting lists, cutting instructions and bill of material
- CAD Interface via DXF export
- Part and offcut labels
- Computer based tutorial and movies
- Support via online help, movies, phone, fax, internet
- Available in many languages

Summary of Optimization Results									
Calculating Margins	0								
Setup Width	0								
Number of Layouts	24								
Number of Stock Used	252								
Total Utilization	99.16								
Total Parts Required									
Total Parts Needed									
Remainder Offcut									
Total Stock Weight									
Total Part Weight									
Total Offcut Weight									
Total Scrap Weight									

Bill of Materials									
Name	Length	Width	Qty	Weight	Toe Qty	Remarks			
1	954	227	1	1.60	25				
2	690	484	2	2.28	46				
3	496	443	2	3.43	46				
4	869	126	1	2.82	28				
Total			6	13.28	136				

Summary of Layouts									
No	Name	Qty	Util %	Cost	Parts	Offcut Qty	Offcut %	Offcut %	Offcut %
1	3	26	96.84	25155.18	182	0	0	0	0
2	2	24	97.64	46956.81	385	0	0	0	0
3	3	23	98.24	11098.81	136	0	0	0	0
4	2	26	99.98	34877.75	280	0	0	0	0
5	2	17	99.95	22094.65	102	0	0	0	0
6	2	1	98.65	2365.81	60	1	1.44	1.44	1.44

**GREAT PRODUCT**

**HONEST PRICE**

**GENUINE SUPPORT**