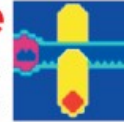




PLUS 1D

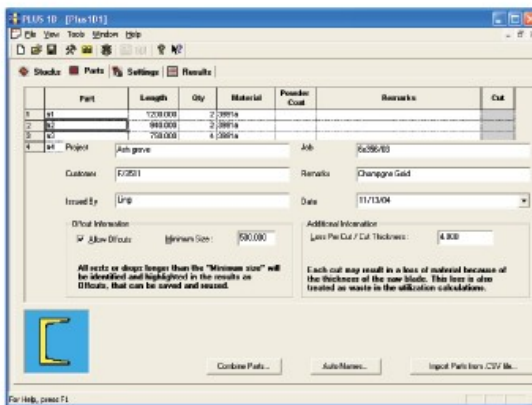
Bar Nesting Software

Proven Powerful and Affordable Optimization Solution
for pipes, bars, channels, sections & extrusions



PLUS 1D is a Bar Nesting (multing) optimization software, to reduce waste in cutting 1D (lineal) material like pipes, bars, sections, channels, profiles and extrusions. The software finds application in Steel fabrication, Structural steel estimation, Aluminum Architectural Systems, Facades, Windows etc.

The nesting technology based on sophisticated algorithms ensures that **PLUS 1D** consistently delivers high utilization patterns drastically reducing the material waste and maximizing operator productivity. It provides material requirements and cost estimates, for accurate budgeting, planning and scheduling to give you a competitive edge.



Project Details							
Project Name							
File Name C:\Program Files\Irvana\Plus1D\sample\plus1d							
Job Order							
Date Tuesday, March 02, 2004							
Summary of Layouts							
No.	Material	Stocks	Size	Qty	Util %	Off	Details [Part Length x Qty]
1	d22	d22	6000.000	4	98.74	0.000	323.200x4 314.000x2 286.500x6 286.500x2 142.500x5 142.500x5 323.200x4 314.000x2
2	d22	d22	6000.000	2	98.74	0.000	286.500x6 286.500x2 323.200x4 314.000x2
3	d22	d22	6000.000	2	96.96	0.000	323.200x18
4	d22	d22	6000.000	2	98.60	0.000	314.000x12 286.500x7 142.500x1
5	d22	d22	6000.000	17	97.88	0.000	286.500x20 142.500x1
6	d22	d22	6000.000	8	97.38	0.000	142.500x41
Stock Details							
Stock	Length	Qty	Material	Remarks	Used		
d22	6000.000	1000	d22		38		
Offcut/Drop List							
No.	From Stock	Size	Qty	Material			
1	d22	1780.500	1	d22			

- Optimizes any number of stocks and parts
- Import data from spreadsheets by simple copy/paste or via CSV files
- Integrated Inventory module tracks stocks and promotes reuse of offcuts.
- Powder Coating database and estimation
- Options to specify end-trims, cut allowances
- Metric, English (fractional inches) units support

- Accumulates job statistics for future analysis
- Comprehensive and concise reports that satisfies Production, Planning and Purchase departments.
- Tailored RTF output that you can e-mail, print and edit in any word processor
- Outputs material quantities, costs, weights and surface area for powder coating etc.
- Fast simple and efficient, with online tutorials. Easily integrates with in house databases

*This is the best piece of software we have purchased. It has saved up thousands of dollars in cost and time. We are very impressed.
Ian, Premsteel Fabricators, Canada*

*Great work! The software is very easy to use and the only one I could find to do what we need to do.
Jonathan (Jon) K. Edwards, Pacific Int'l Tool and Shear, Ltd., USA*

Minimum System Requirements:

Pentium-3, 300 MHz, 64 MB RAM,
10 MB free disk space,
Windows 98/2000/ Xp.

